

MODEL 313

Hot Stamp Imprinter

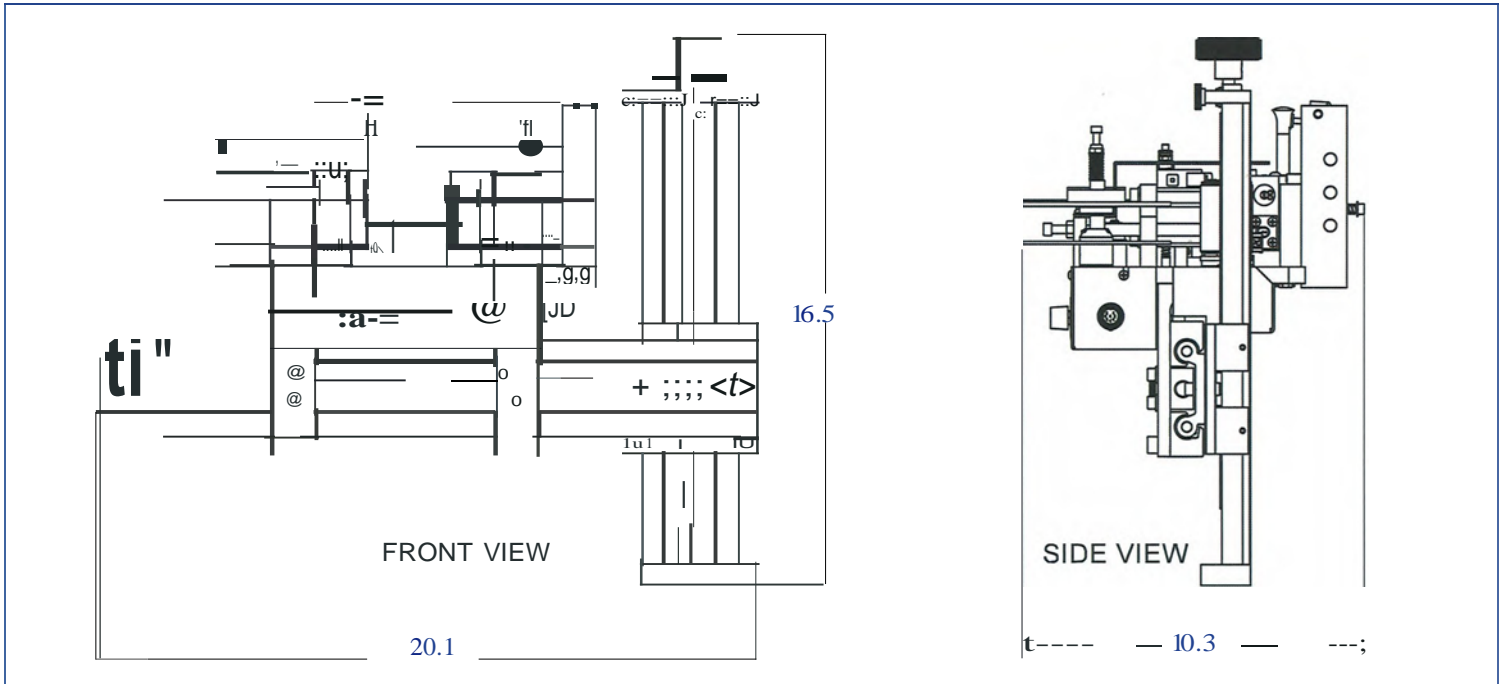


6209 Richards Dr. Shawnee, KS 66216
800-821-2177 Email: Info@MillerBevco.com
www.MillerBevco.com

MODEL 313

Hot Stamp Imprinter

- For imprinting date codes, lot numbers, and other variables directly on labels prior to application.
- Easily mounts on any Auto Labe dispenser, semi-automatic and automatic application.
- High-speed production capability up to 150 labels per minute.
- Easy to adjust imprint area positions, date codes, and other variable information.
- Provides imprinting capability to an area 1" x 1.25" in either direction on your label from plates or type.



EQUIPMENT SPECIFICATIONS:

DIMENSIONS: (overall)

Width: 14 in / 36 cm
 Length: 9.5 in / 24 cm
 Height: 13-18 in / 33-46 cm

WEIGHT:

24 lbs / 11 kg

ELECTRIC:

115 VAC 160 HZ / 1 AMP (max.)

AIR:

60 psig (max.)

SHIPPING WEIGHT:

27 lbs / 13 kg

SHIPPING CRATE DIMENSIONS:

Width: 16 in / 41 cm
 Length: 16 in / 41 cm
 Height: 16 in / 41 cm



DIVISION OF BOOTH MANUFACTURING COMPANY

Miller/Bevco 6209 Richards Drive Shawnee, KS 66216

Toll Free 800-821-2177 Fax 913-322-1729

Email: Info@MillerBevco.com www.MillerBevco.com